

# TRAILHEAD PARKING ALTERNATIVES

Trailhead Parking Alternatives – Total Parking Spaces from S.R. 209/S.R. 210 Intersection to Snowbird Entry 1 by Trailhead Alternative

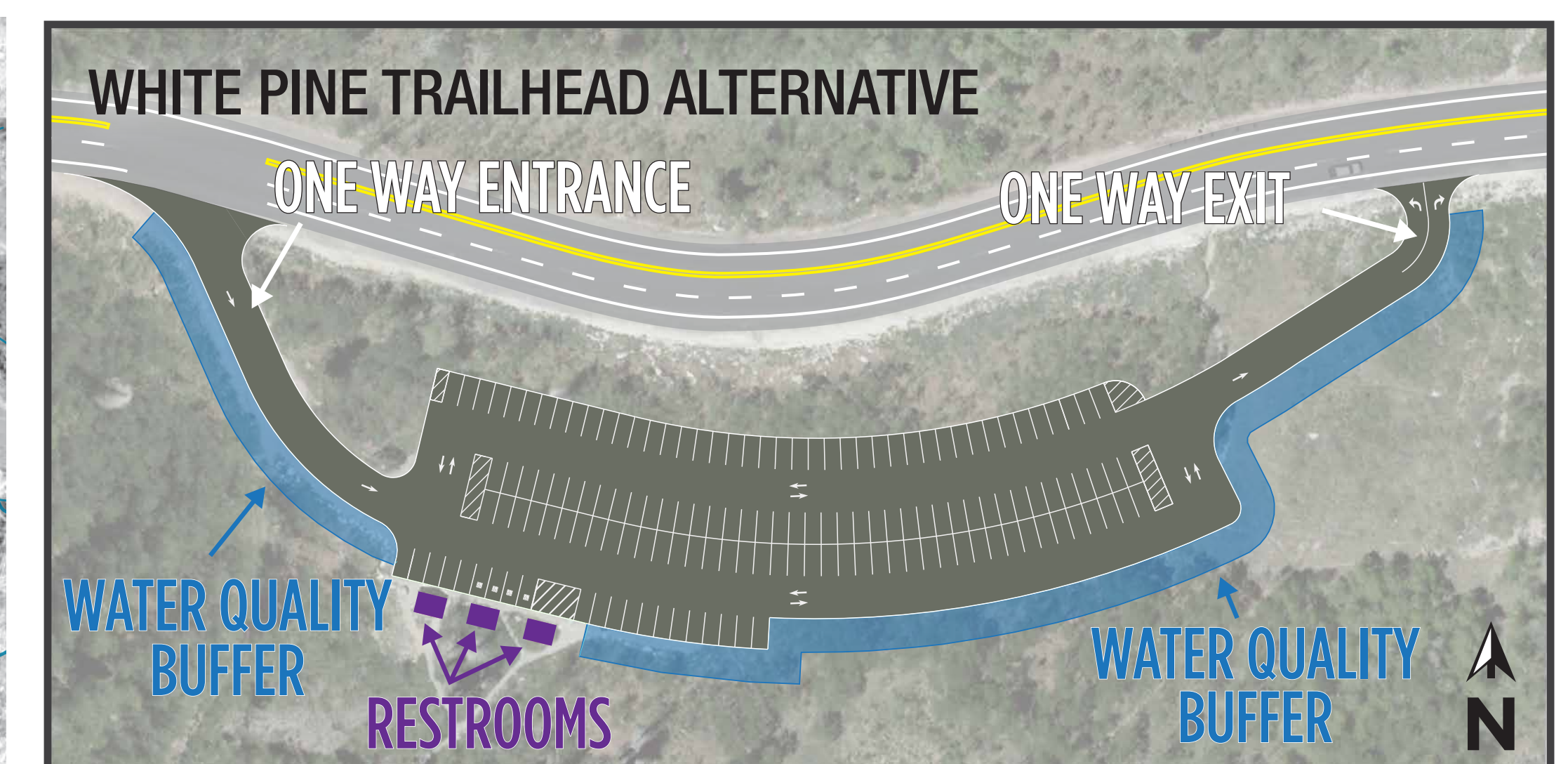
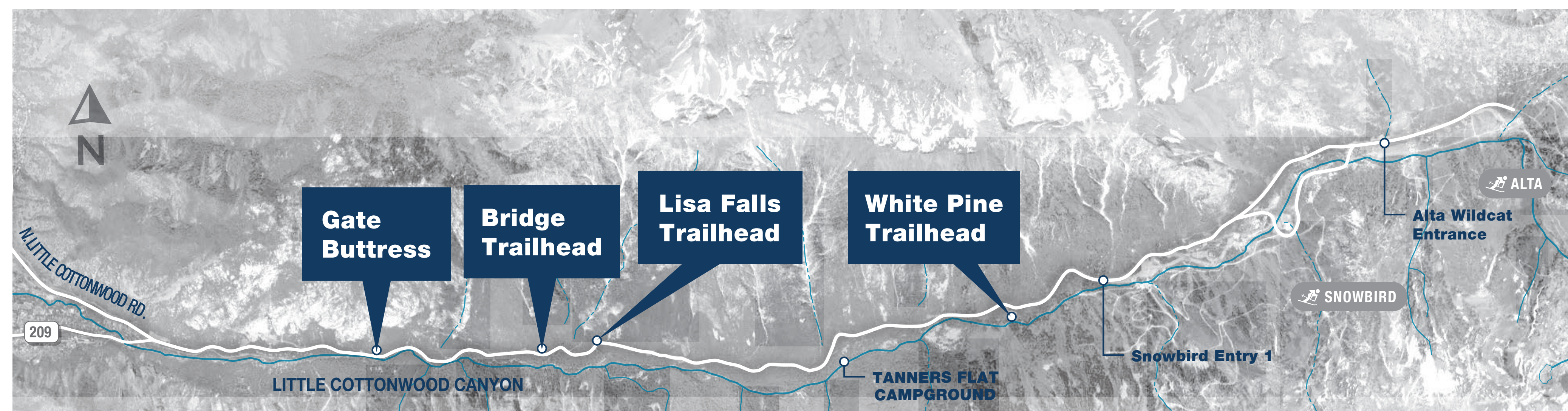
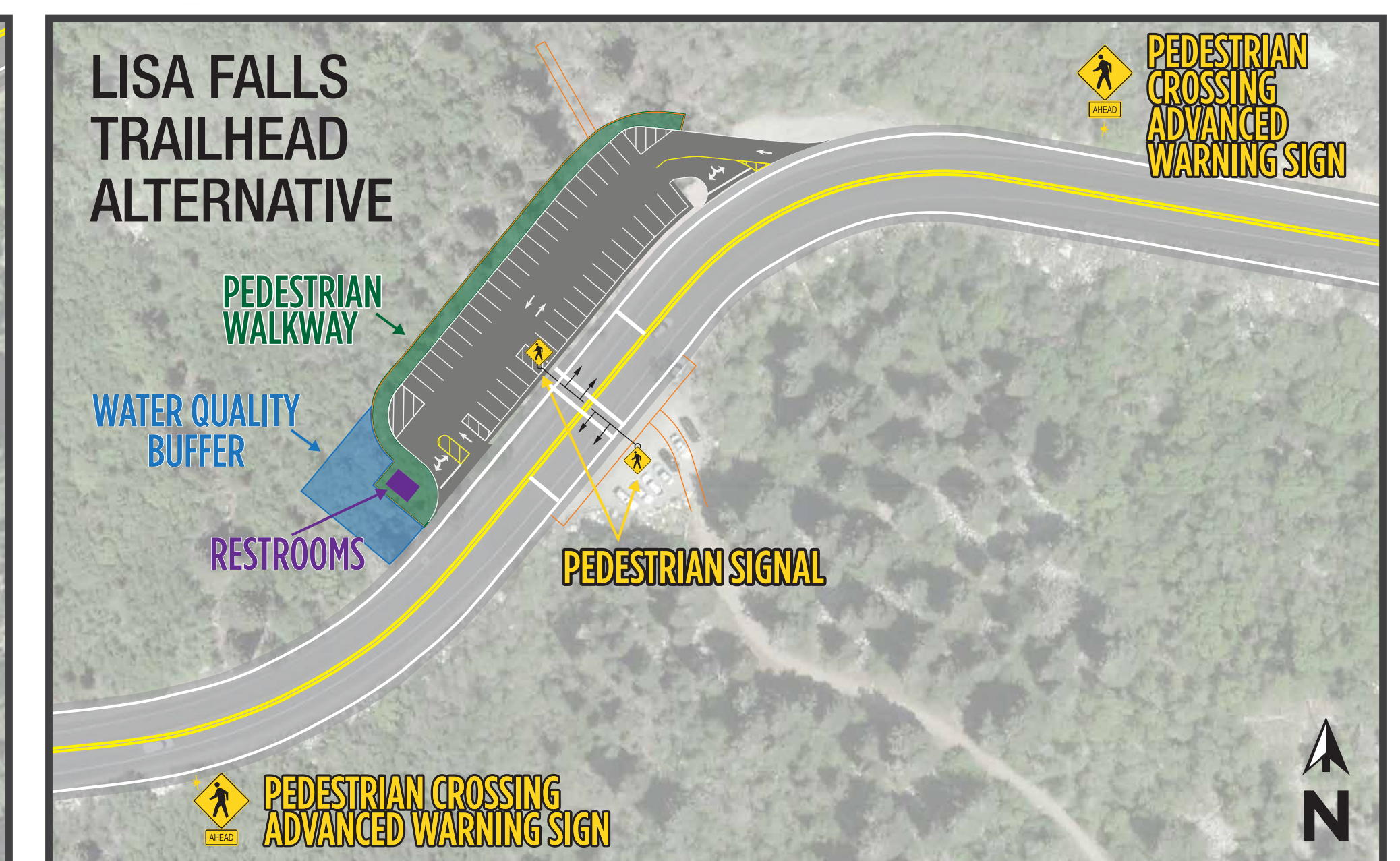
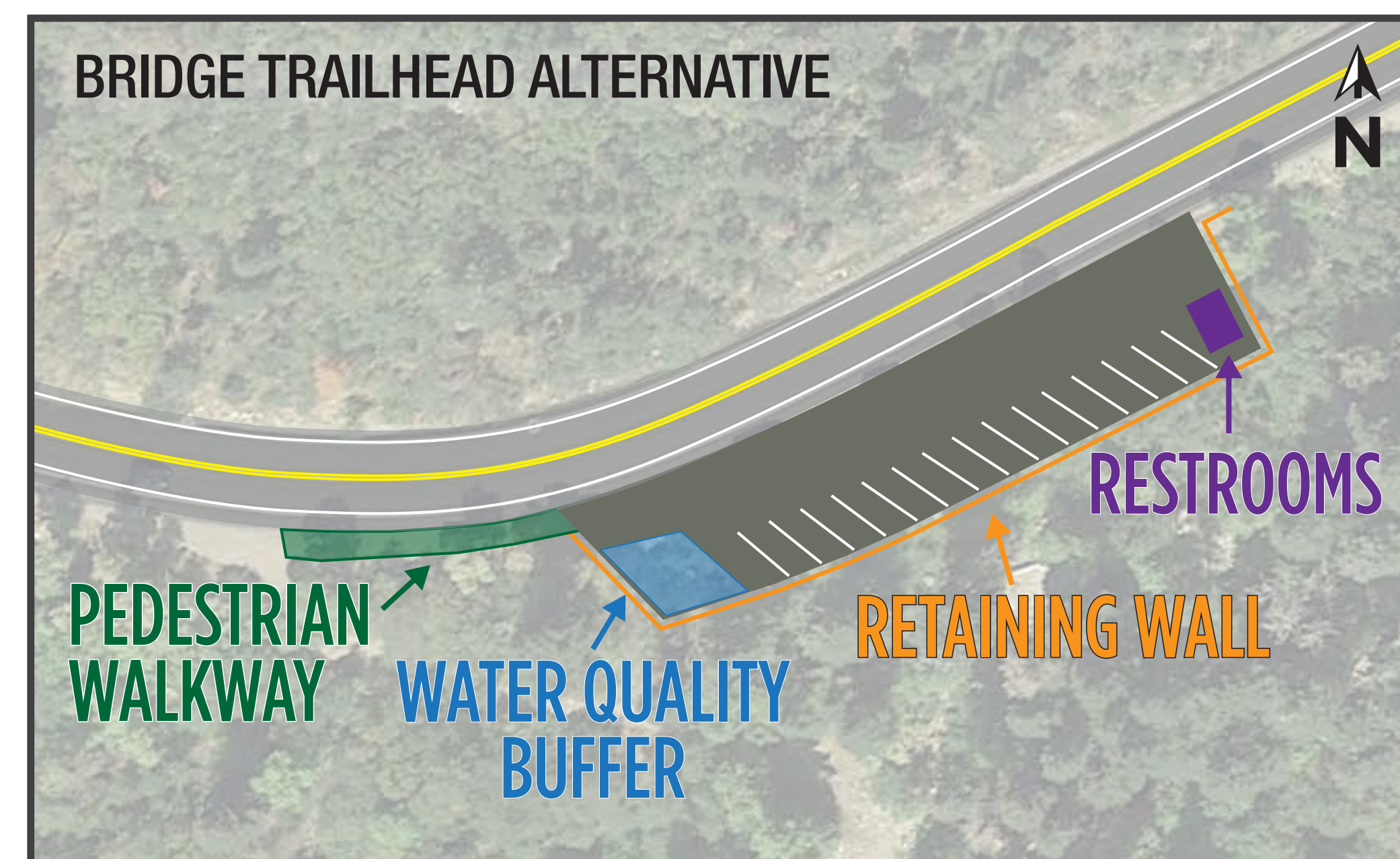
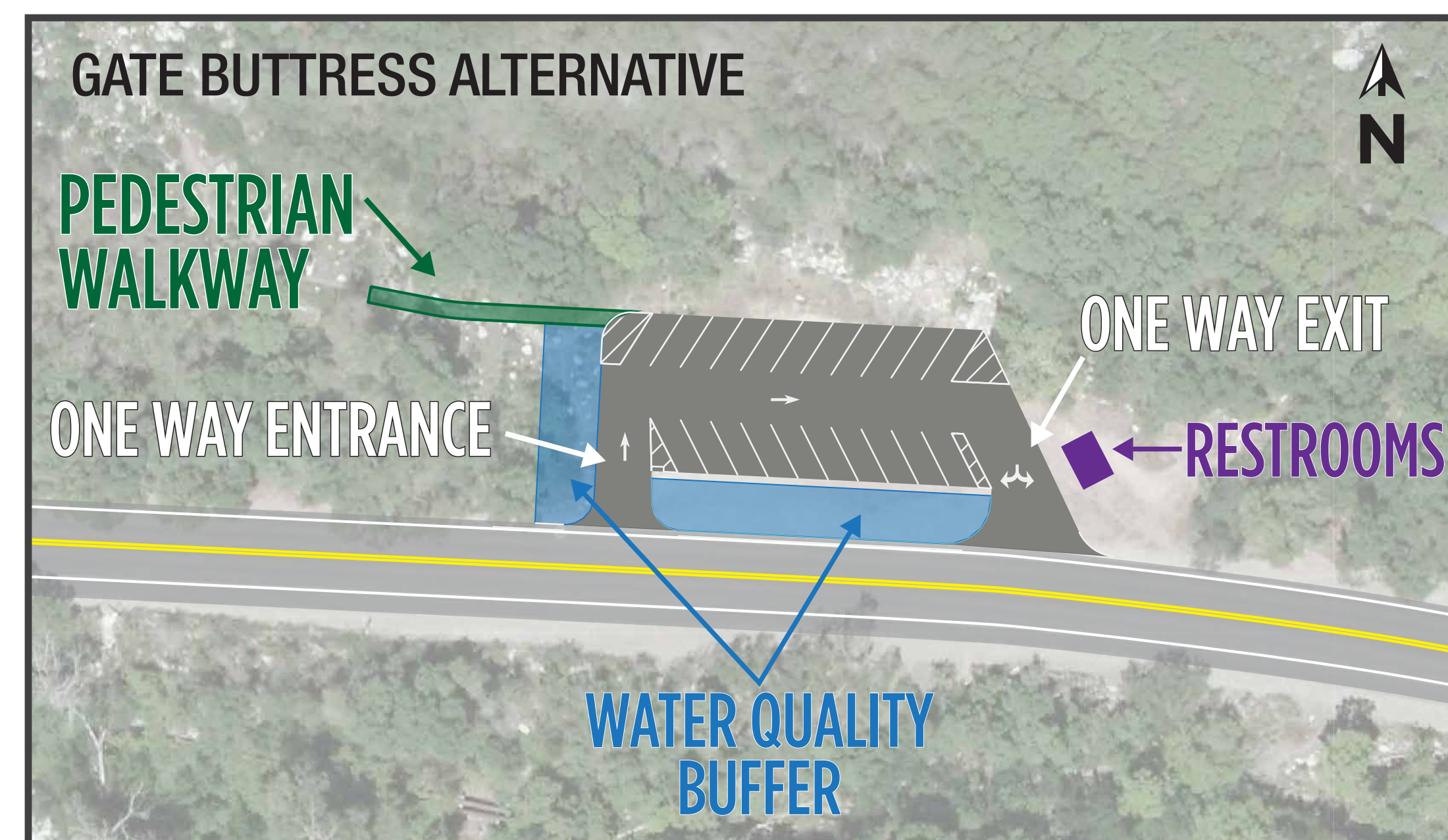
Parking Area	Number of Parking Spaces			
	Existing Parking	Improve Trailhead Alternatives		No Improvement to Trailhead Alternative
		No Roadside Parking ¼ Mile from Trailhead below Snowbird Entry 1 (Alternative A)	No Roadside Parking below Snowbird Entry 1 (Alternative B)	No Roadside Parking below Snowbird Entry 1 (Alternative C)
Roadside parking	429	290	0	0
Gate Buttriss Trailhead	30 (in formal dirt lot)	21	21	30 (in formal dirt lot)
Bridge Trailhead	Not applicable (roadside parking only)	15	15	0
Lisa Falls Trailhead	17 (north and south dirt pullouts)	41	41	17 (north and south dirt pullouts)
White Pine Trailhead	52	144	144	52
<b>Total parking spaces</b>	<b>528</b>	<b>511</b>	<b>221</b>	<b>99</b>

*If PPSL is selected, Alternative B would be implemented*

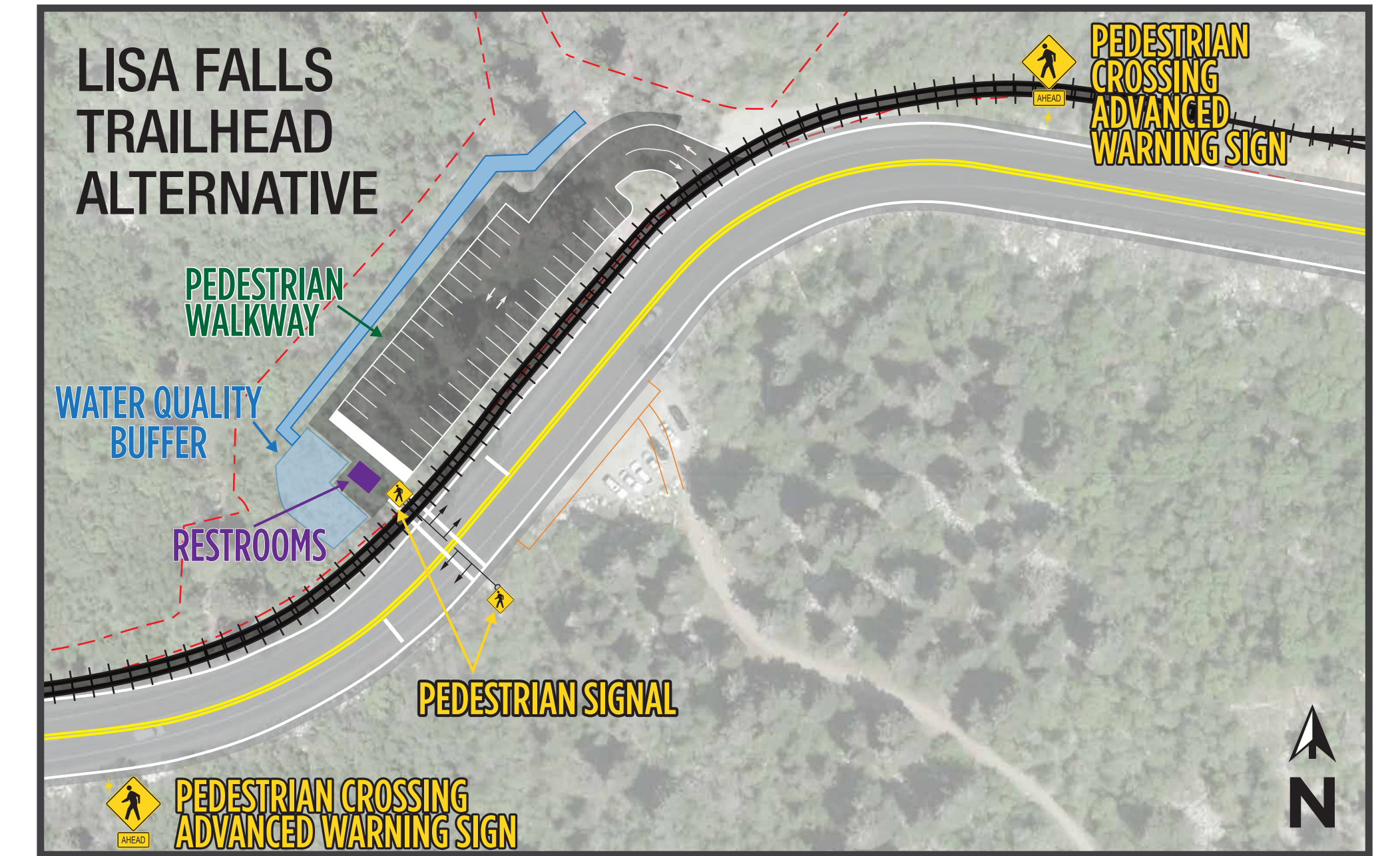
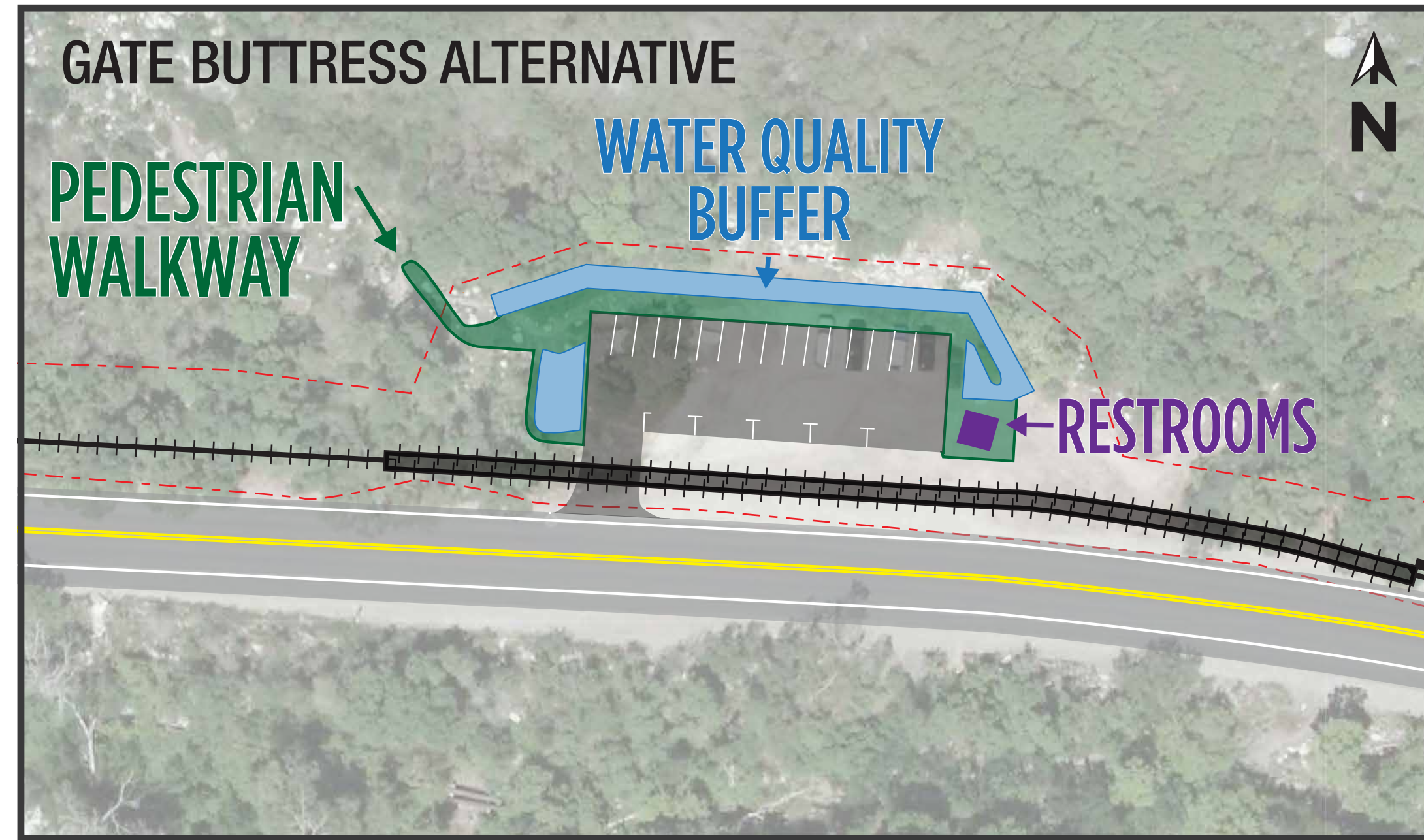
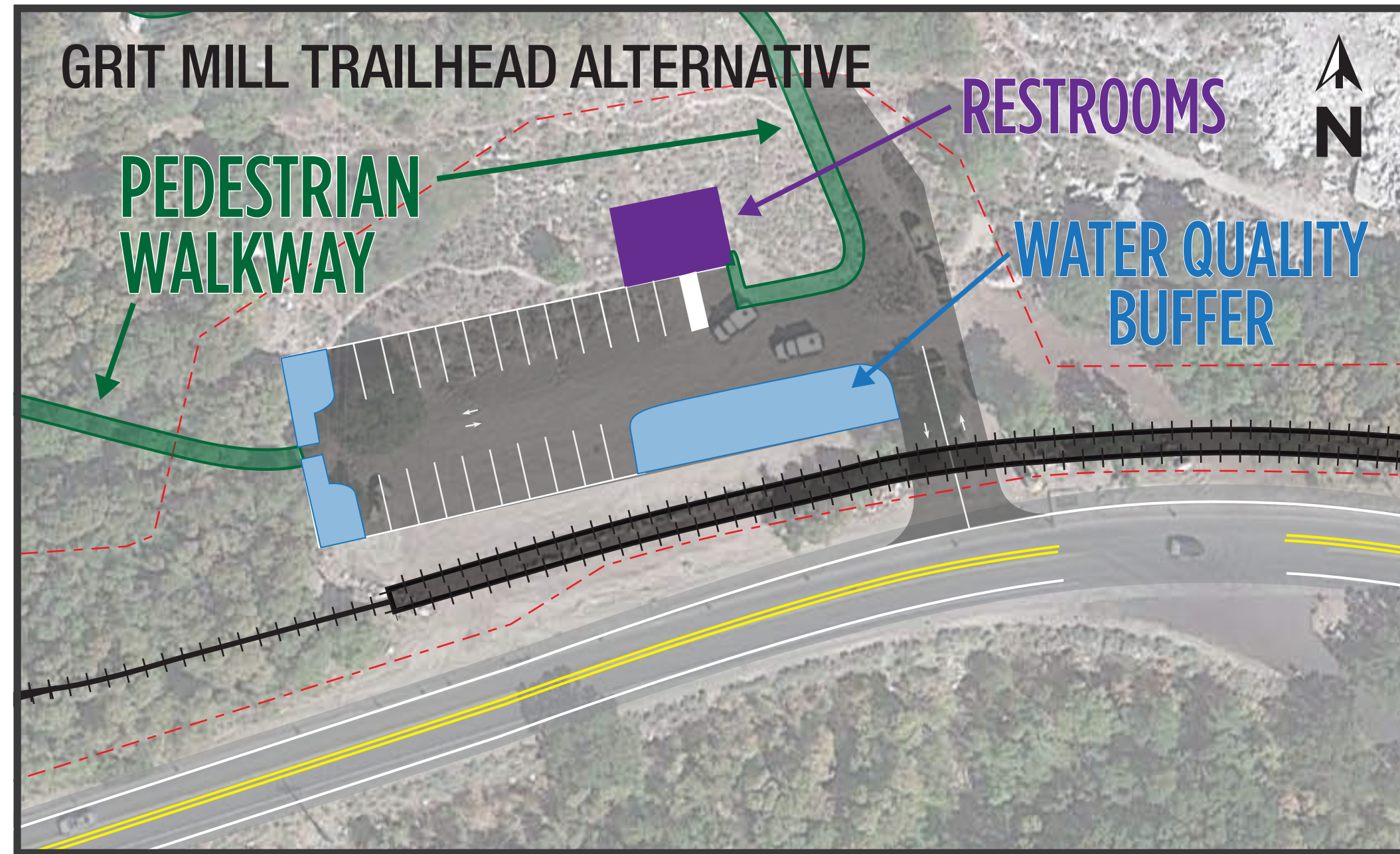
## Trailhead Parking Alternatives

Alternative	Description
Alternative A	Eliminate roadside parking within ¼ mile of each trailhead parking area below Snowbird Entry 1
Alternative B	Eliminate roadside parking from the intersection of S.R. 209/S.R. 210 below Snowbird Entry 1
Alternative C	Eliminate roadside trailhead parking related to summer use from the intersection of S.R. 209/S.R. 210 below Snowbird Entry 1 and no expansion of existing parking areas

The Cog Rail Alternative at Gate Buttriss and Lisa Falls will relocate trailhead improvements farther away from the road, toward the mountain-side.



# COG RAIL TRAILHEAD PARKING ALTERNATIVES



The Bridge and White Pine design will not change from what is shown in the other four alternatives.

# NO WINTER PARKING ALTERNATIVE

With the No Winter Parking Alternative, about 230 roadside parking spots would be eliminated during the winter near the ski resorts. The map below shows the locations where new no-parking areas would be located. Roadside parking is used during winter peak days when the main ski area parking lots are at capacity. With the action alternatives, there would be sufficient parking in the valley to accommodate users. No winter roadside parking on S.R. 210 only applies to the area above Snowbird Entry 1.

