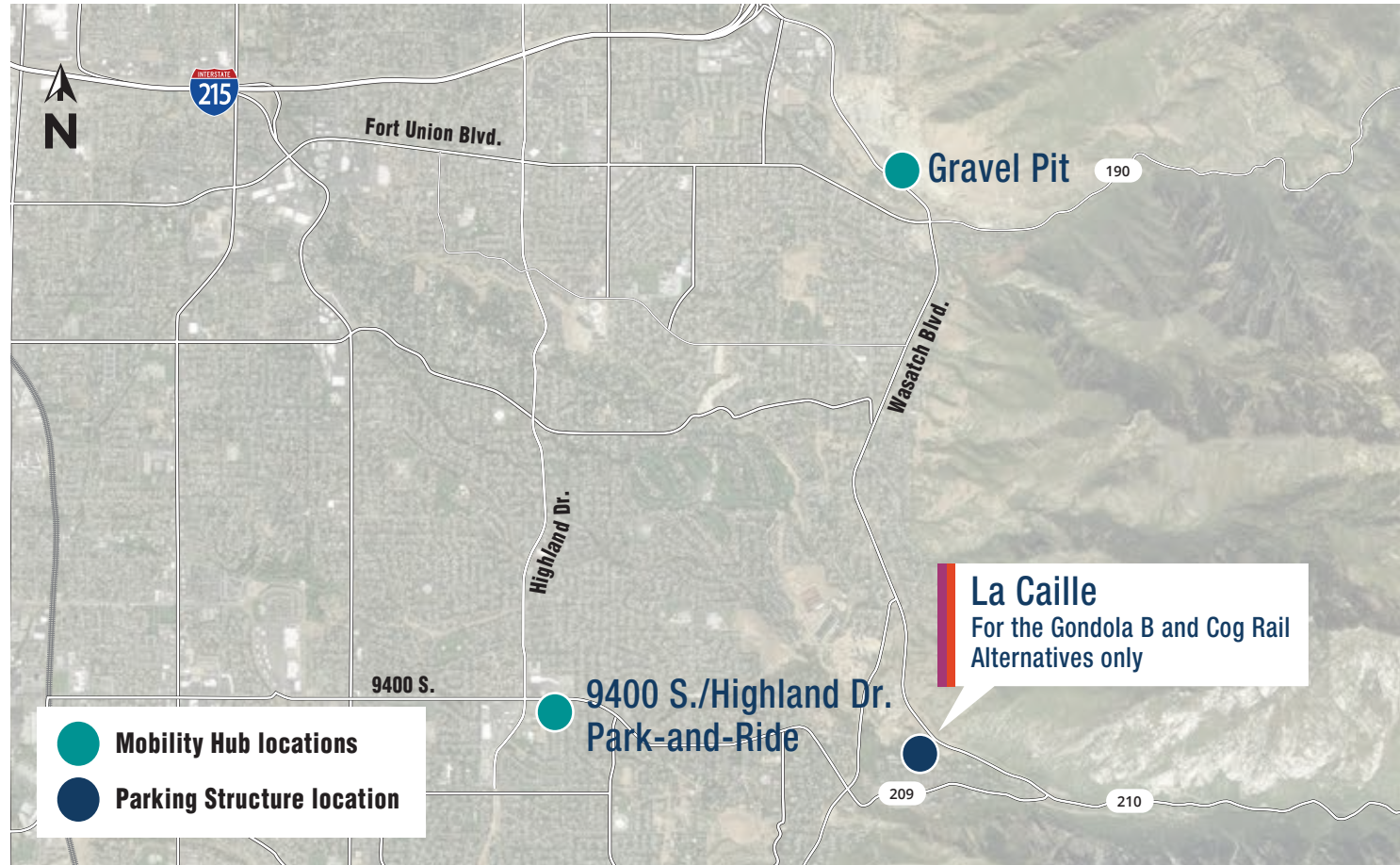


# MOBILITY HUB ALTERNATIVES

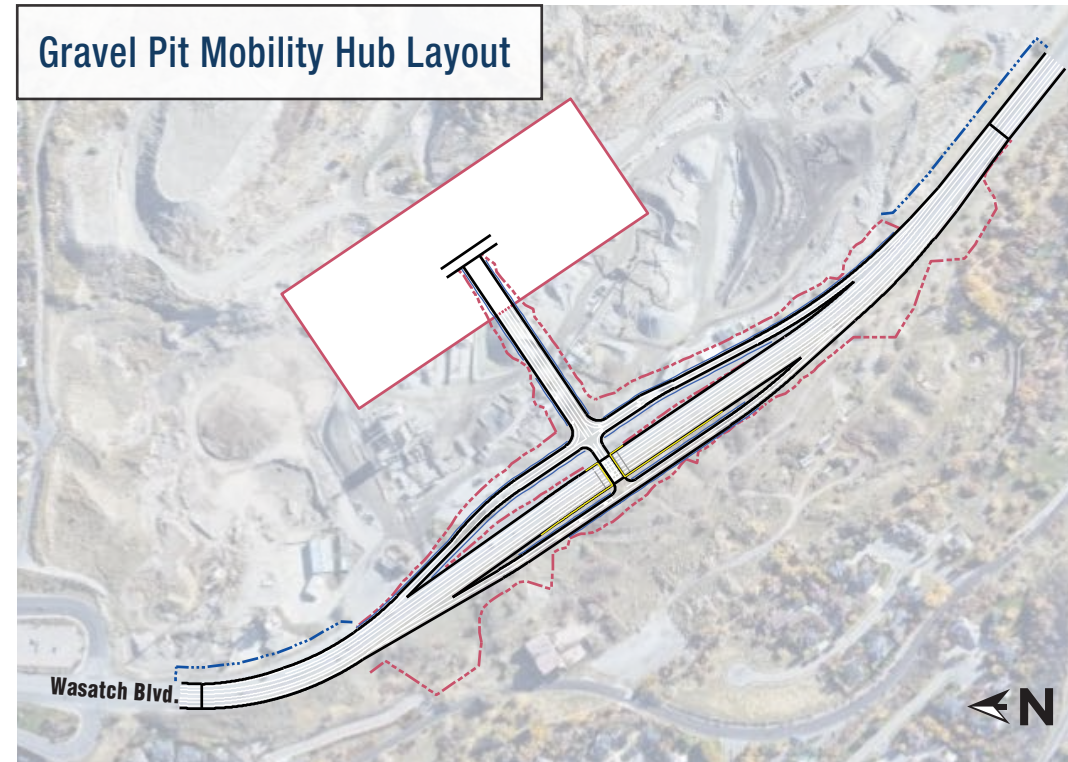
## MOBILITY HUB ALTERNATIVES EVALUATED

To support personal vehicle parking for the transit alternatives (bus, gondola and rail), UDOT evaluated 15 potential locations for a mobility hub to service Little Cottonwood Canyon. The mobility hub locations could be used for bus service directly to the ski resorts or for bus service to a train or gondola station. These locations were used with each bus, gondola and rail alternative to help evaluate each transit alternative. UDOT selected the Gravel Pit and 9400 S./Highland as the preferred locations.

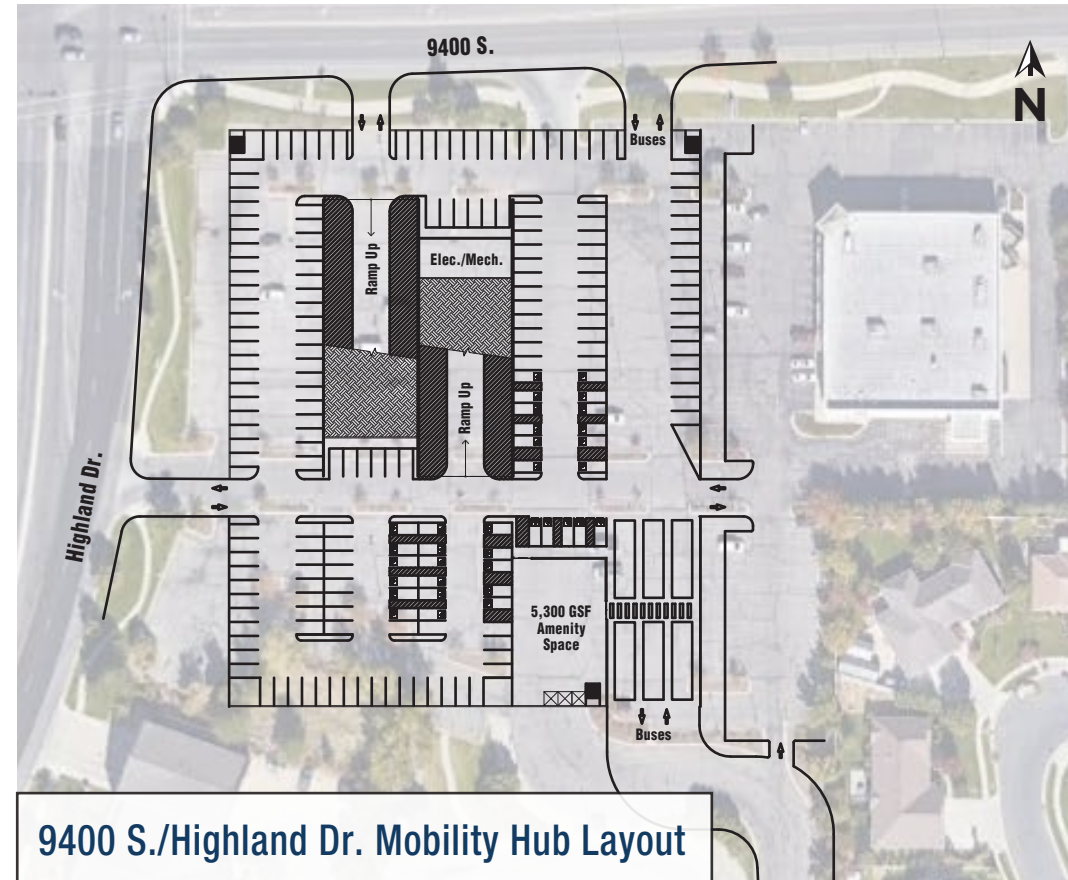


Traffic count data indicates about 40% of the traffic going to Little Cottonwood Canyon comes from the south Salt Lake Valley and uses 9400 South/S.R. 209, and about 60% comes from the north and uses S.R. 210. Based on the traffic count data, UDOT assumed that about 40% of transit users would park at the south transit hub and about 60% would park at the north transit hub.

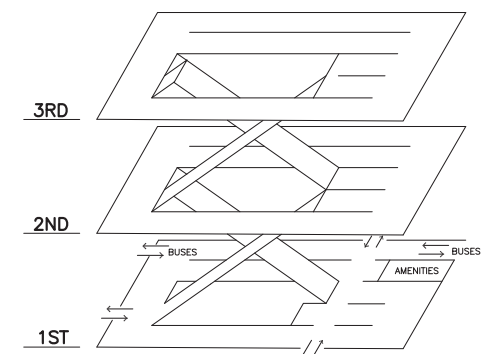
Transit Ridership	Estimated Number of Parking Stalls			Cost (millions)		
	Gravel Pit	9400 S./Highland	La Caille	Gravel Pit	9400 S./Highland	La Caille
Enhanced Bus Service, Enhanced Bus Service in Peak-Period Shoulder Lane and Gondola A (from LCC Park-and-Ride) Alternatives	1,500	1,000	N/A	\$78	\$21	N/A
Gondola B and Cog Rail (from La Caille) Alternatives	600	400	1,500	\$29	\$8	\$32



Concept of Mobility Hub at the Gravel Pit



**What is a mobility hub?**  
A mobility hub is a location where users can transfer from their personal vehicles to a bus.



Conceptual Parking Levels